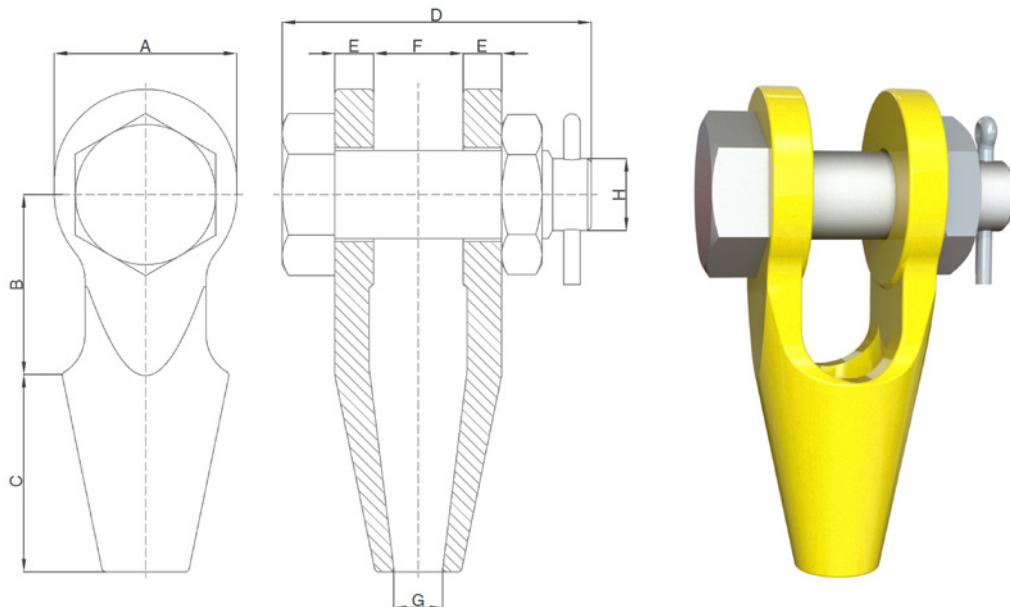


FORGED SOCKETS

Irizar Forge team can accommodate any forged socket to the specific lifting, rigging or mooring operation the market is ready to operate up to 320t, from safety, design, material strength and certification point of view.

- WLL: 320t.
- Swivel forged, heat treated and fully machined.
- Material: carbon, alloys and super alloys.
Most regular: super alloy steel.
- Rope diameter: acc to customer requirement.
- Safety Factor: min. 5:1.
- Surface Protection & Coatings: upon request.
- Sealings: upon request for subsea and offshore apps.
- Load Test: requested / recommended.
- Certificate: EN10204-3.1. For 3.2, ILO-3, FAT or Breaking Test available upon request.

Open forged sockets



| FORGED SOCKETS OPEN FORGED SOCKETS | | | | | | | | | | | | |
|--------------------------------------|---------------|---------|---------|-----|-----|-----|-----|-----|-----|-----|-----|--------|
| Overall dimensions (mm) | | | | | | | | | | | | Weight |
| Art. No | Wire Ø inch | WLL (t) | MBL (t) | A | B | C | D | E | F | G | H | kg |
| IFSSS-140 | 3 1/4 - 3 3/8 | 140 | 700 | 286 | 298 | 330 | 412 | 79 | 159 | 92 | 140 | 224 |
| IFSSS-150 | 3 1/2 - 3 3/8 | 150 | 750 | 310 | 318 | 356 | 432 | 83 | 171 | 99 | 152 | 280 |
| IFSSS-190 | 3 3/4 - 4 | 190 | 950 | 352 | 343 | 381 | 464 | 89 | 191 | 108 | 178 | 378 |
| IFSSS-240 | 4 1/2 | 240 | 1200 | 430 | 480 | 460 | 510 | 101 | 208 | 125 | 190 | 564 |
| IFSSS-280 | 5 | 280 | 1400 | 550 | 500 | 500 | 560 | 120 | 210 | 138 | 250 | 922 |
| IFSSS-400 | 5 1/2 - 6 | 400 | 2000 | 590 | 500 | 580 | 620 | 140 | 230 | 160 | 275 | 1295 |
| IFSSS-500 | 6 1/2 | 500 | 2500 | 640 | 600 | 675 | 710 | 175 | 310 | 175 | 290 | 1950 |