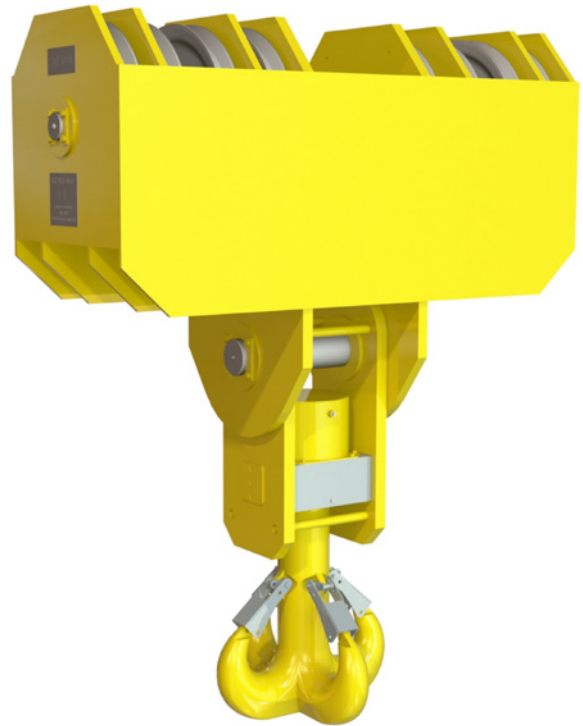
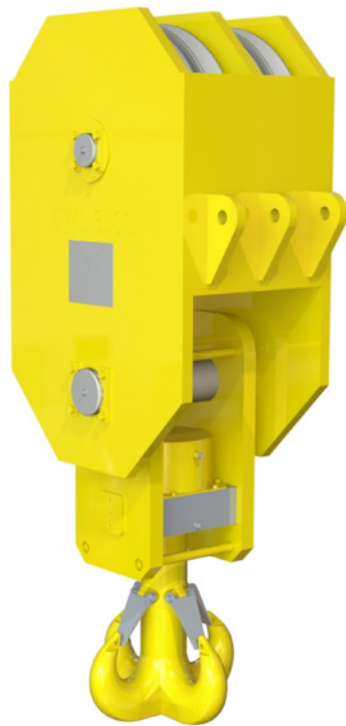


## OFFSHORE CRANE BLOCKS

### Multiple sheaves offshore block



- WLL: from 80t to 2.000t.
- Hook: Ramshorn or Quad based on DIN15400 or others. Forged and heat treated fully machined with nut & crosshead. Material grades: alloy (T/V). See chapter 1 (Crane Hooks).
- Sheave: Multiple sheaves. Solid sheaves.
- Bearing: axial for hook assembly + roller/ spherical-roller for sheaves. Bronze bushing fully recommended.
- Coating Protection: fully painted inside & outside for offshore environment.
- Sealings: for offshore topsite and subsea lifting.
- Certificate: EN10204-3.1. For 3.2 cert with Worldwide classification societies upon request.