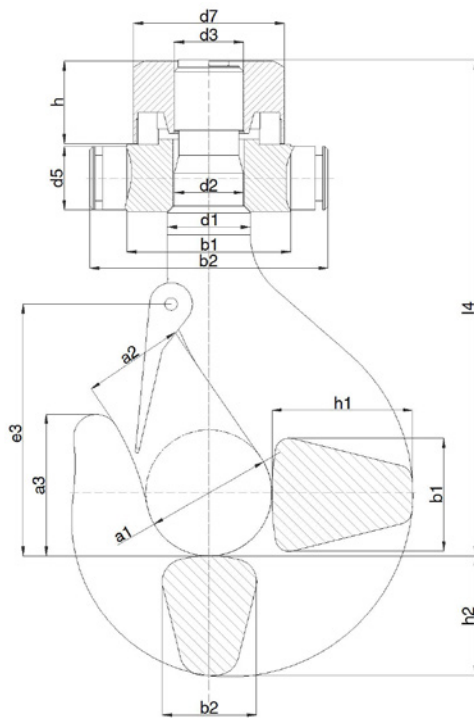


SHANK HOOKS BASED ON EN13001-3-5:2016

Single forged hooks based on recognized european designs

Single forged hooks based on DIN15401 design

Machined fitted with nut, crosshead and bearing



- WLL: from 5t to 2.000t.
- Hook, Nut and Crosshead forged, heat treated and thread fully machined as per DIN15403 design.
- Material: carbon, alloys and super alloys. Stainless steels available upon request.
- Mechanical properties: P, S, T, V, W.
- Safety Factor: min. 4:1 with the highest material grade.
- Load Test: requested / recommended.
- Certificate: EN10204-3.1. For 3.2, ILO-3, FAT or Breaking Test available upon request.

SINGLE FORGED HOOKS BASED ON DIN15401 DESIGN MACHINED FITTED WITH NUT																			
Overall dimensions (mm)													DIN15412 Crosshead			DIN15413 Nut	Weight		
No	a1	a2	a3	b1	b2	d1	e3	h1	h2	d2 h11	d3	l4	b1	b2	d5 h9	d7	h	kg	
2,5	63	50	72	53	45	42	132	67	58	36	M36	250	80	125	30	70	44	9,2	
4	71	56	80	63	53	48	148	80	67	42	M42	281,5	90	140	35	80	49	13	
5	80	63	90	71	60	53	165	90	75	45	M45	314,5	100	155	40	95	56	18,6	
6	90	71	101	80	67	60	185	100	85	50	Rd50x6	375	125	185	45	115	60	27,4	
8	100	80	113	90	75	67	210	112	95	56	Rd56x6	413	140	210	50	125	67	38	
10	112	90	127	100	85	75	221	125	106	64	Rd64x8	446	160	230	55	145	76	54,6	
12	125	100	143	112	95	85	252	140	118	72	Rd72x8	504,5	180	265	60	165	87	85,5	
16	140	112	160	125	106	95	280	160	132	80	Rd80x10	576	190	275	70	175	91	114,5	
20	160	125	180	140	118	106	330	180	150	90	Rd90x10	645	200	295	80	185	102	158,5	
25	180	140	202	160	132	118	360	200	170	100	Rd100x12	716	220	318	90	205	113	222,6	
32	200	160	225	180	150	132	400	224	190	110	Rd110x12	788	260	378	100	240	131	315	
40	224	180	252	200	170	150	447	250	212	125	Rd125x14	885	285	415	110	270	144	443	
50	250	200	285	224	190	170	485	280	236	140	Rd140x16	969	335	465	125	320	153	630	
63	280	224	320	250	212	190	550	315	265	160	Rd160x18	1100	380	522	140	360	181	885	
80	315	250	358	280	236	212	598	355	300	180	Rd180x20	1245	420	565	160	400	198	1254	
100	355	280	402	315	265	236	688	400	335	200	Rd200x22	1388	470	645	180	445	228	1768	
125	400	315	450	355	300	265	750	450	375	225	Rd225x24	1565	510	685	200	490	246	2491	
160	450	355	505	400	335	300	825	500	425	250	Rd250x28	1761	550	750	220	530	274	3483	
200	500	400	565	450	375	335	900	560	475	280	Rd280x32	2012	610	810	240	590	343	4791	
250	560	450	635	500	425	375	980	630	530	320	Rd320x36	2272	700	920	260	680	383	6793	
320	630	500	715	560	475	425	1080	710	580	370	Rd360x36	2565	790	1030	280	760	433	9443	
400	710	560	755	630	530	475	1195	800	630	415	Rd400x36	2878	895	1145	300	865	482	13220	

Tolerances: forging tolerance acc. to DIN15401. Machining tolerances as per DIN15403. Modifications: Shank length (L). Further dimensions upon request.